

megaTrak™ Warehouse Management System

Improve Warehouse Efficiency and Accuracy

Comprehensive Warehouse Management

megaTrak WMS™ is a comprehensive Warehouse Management System (WMS) for those who need to improve the management their warehouse inventory, production, labor, pick, pack and ship processes. megaTrak WMS™ gives supreme flexibility without sacrificing ease of use and scalability as your organization grows and changes with your market. megaTrak WMS™ is much more than a "barcode system"...it offers organizations a flexible platform to grow with your organization. megaTrak WMS™ is designed to drive process improvement, direction, inventory accuracy and improvement in inventory and order fulfillment.

megaTrak Mobile Highlights

megaTrak™ desktop and forms are flexible, extensible and device agnostic. megaTrak Mobile™ Support Windows Mobile, Android and iOS on any device. Every field, label, action, screen and transaction can be modified through our configuration tool. In addition, new apps can be added and configured without any programming.



A - Receiving

B - Inventory

C - WIP

PICK/ISSUE WO PUTAWAY SPECIFIC ISSUE DE-ISSUE

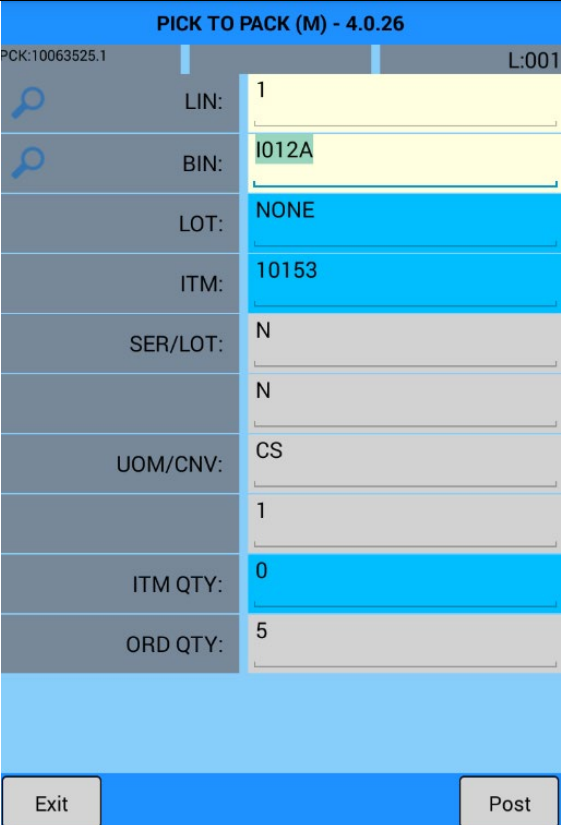
SET WO STATUS MV ITEM MAT TO MV ITEM PLT TO MOVE TO TRL (P)

COMPLETE PALLET WIP RECEIPT WIP REVERSAL

D - Picking

E - Packing

G - Labor



PICK TO PACK (M) - 4.0.26

PCK:10063525.1 L:001

LIN: 1

BIN: I012A

LOT: NONE

ITM: 10153

SER/LOT: N

UOM/CNV: CS

ITM QTY: 0

ORD QTY: 5

Exit Post

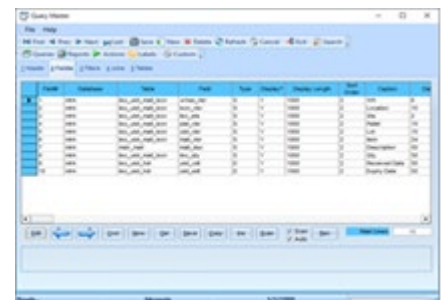
Mobile programs can transact, query and print.

All programs, screens and fields can be modified as needed.

megaTrak™ Feature Highlights

megaTrak™ WMS is a robust Warehouse Management System offering all the key functions you would expect with a Tier-1 / Tier-2 WMS. Not only is the system highly flexible, it will scale with your business as you grow.

- PO and LCT Receiving
- PO Receipt reversals
- PO Inspection Count, Scrap, Accept transactions
- Inventory Move, Adjust, Transfer, Expense Issue Transactions.
- Directed putaway based on configurable and dynamic rules.
- Cycle Count transactions with scheduling ability by Item Class / ABC codes.
- RMA, RTV and Return to Stock Modules (RTS)
- Directed replenishment based on configurable rules.
- WIP Receipts
- WIP Kit Issues and Specific Kit Issues
- WIP Batch, Wave and Single Work Order Picking
- WIP Labor Posting
- WIP Directed Putaway
- WIP Inspection Transactions
- Pallet License Plating for PO Receipts, WIP and Sales Order Picking.
- Configurable and Automated Sales Order release and pick creation.
- Sales Order Batch, Wave and Single Order picking
- Sales Order Pallet and Package Packing on the desktop and mobile device
- Directed Picking and Packing
- Zone Picking
- Full LTL and Small box Freight and Shipping.
- Multiple shipping options for small box and freight vendors (see below)
- Extensive labeling with Seagull Scientific BarTender 2016 and 2019.
- Extensive Reporting with Crystal reports 2013 and 2016.



Configuration Toolset

megaTrak™ provides unmatched configuration functionality by allowing reseller, consultants and IT professionals to configure every part of the system without programming. Custom scripts can also be inserted in the system for more complicated scenarios.

megaTrak™ Architecture Highlights

megaTrak™ WMS is built with modern toolsets and is extensible through a REST API. megaTrak™ v.4.0 has a modern messaging system that uses the REST services with the latest in Microsoft .NET Core MVC technology. This gives the customer the ability to have On-Prem, Cloud or a Hybrid architecture mix when implementing megaTrak.

This means that any web, mobile or windows client can communicate with the services from anywhere as these services are made available over the internet. This, of course, integrates all the necessary secure transfer technology with HTTPS.

Notable Features

- megaTrak interfaces with the newest version of BarTender for label printing. Labels can be built in BarTender and imported into the system.
- megaTrak™ 4.0 introduces new program types: configurable dashboards, charts and additional order management tools.
- megaTrak™ v.4.0 comes with a fully REST based API.
- megaTrak™ v.4.0 provides full report creation and printing through Crystal Reports 2013. Reports are built in Crystal then imported into megaTrak for use.
- megaTrak™ is Cloud / Azure ready with IaaS, SaaS and PaaS options.

Optional Modules and Features

In addition to core WMS functionality, megaTrak also offers key options for seamless shipping and EDI processing

- **megaTrak Shipping™ vendor options include UPS, FedEx, UPS Freight, FedEx Freight, USPS, Endicia, Purolator and Canada Post.**
- **megaTrak™ Supports Inbound shipment tracking with Landed Cost Tracking and “on the water” tracking.**
- **megaTrak™ supports interplant movements as well as the pick, pack and ship of Supply Chain Transfers.**
- **megaTrak™ interfaces to EDI systems as well as provides file transfers for JSON, XML, Web Service, REST, WCF and FTP services.**
- **megaTrak™ provides 3PL service, space and transactional billing based on service types which interface to accounting and ERP systems.**

megaTrak™ automates the shipping process so you do not have to leave the application to process your shipments. At the time of packing / shipment, the freight vendor's label will be created, the tracking numbers and freight costs recorded, and the shipment posted online real time. If you are keeping contents of the package, we will match the contents of a package with a tracking number. These will automatically be added to your order in your ERP or Accounting system.

At day end megaTrak™ can produce a manifest by carrier that provides detailed and summary information on what shipped for that carrier.

